

SELECT

Sustainable Electrified Transportation Center
A transformational, holistic approach to transportation electrification

UtahStateUniversity

Thor Roundy

Ignite



9-28-2016

TRIC BUS OPERATED BY CHARGING WIRELESSLY

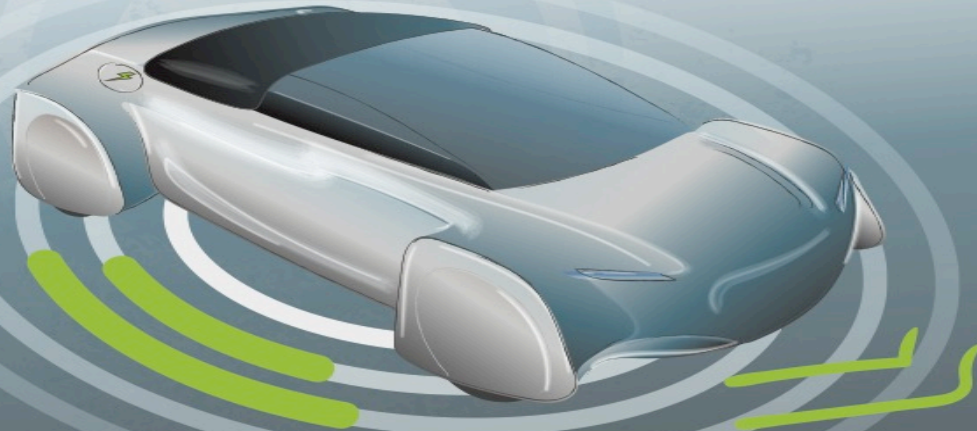
Energy ••• Wireless Charging

UtahStateUniversity

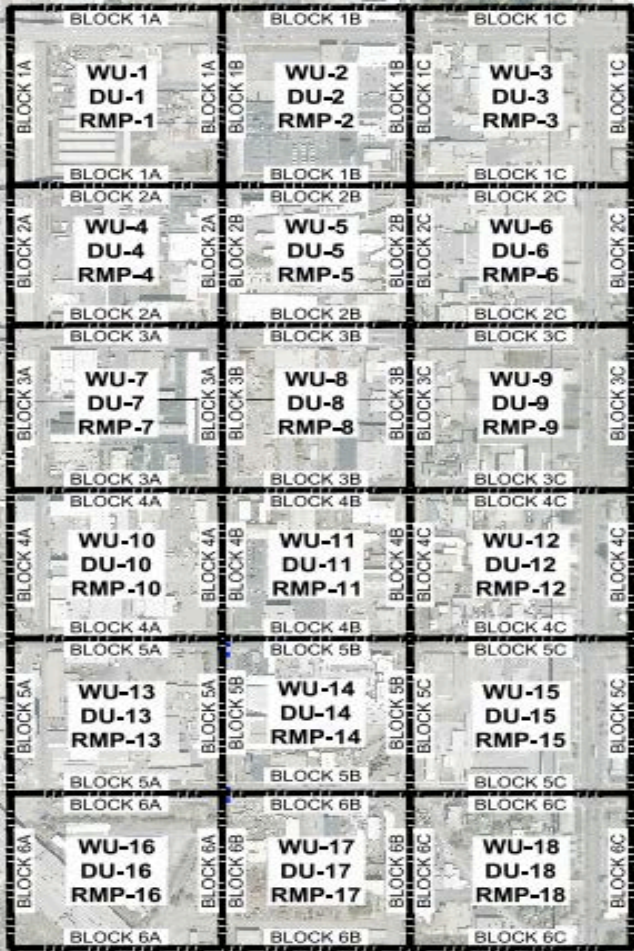
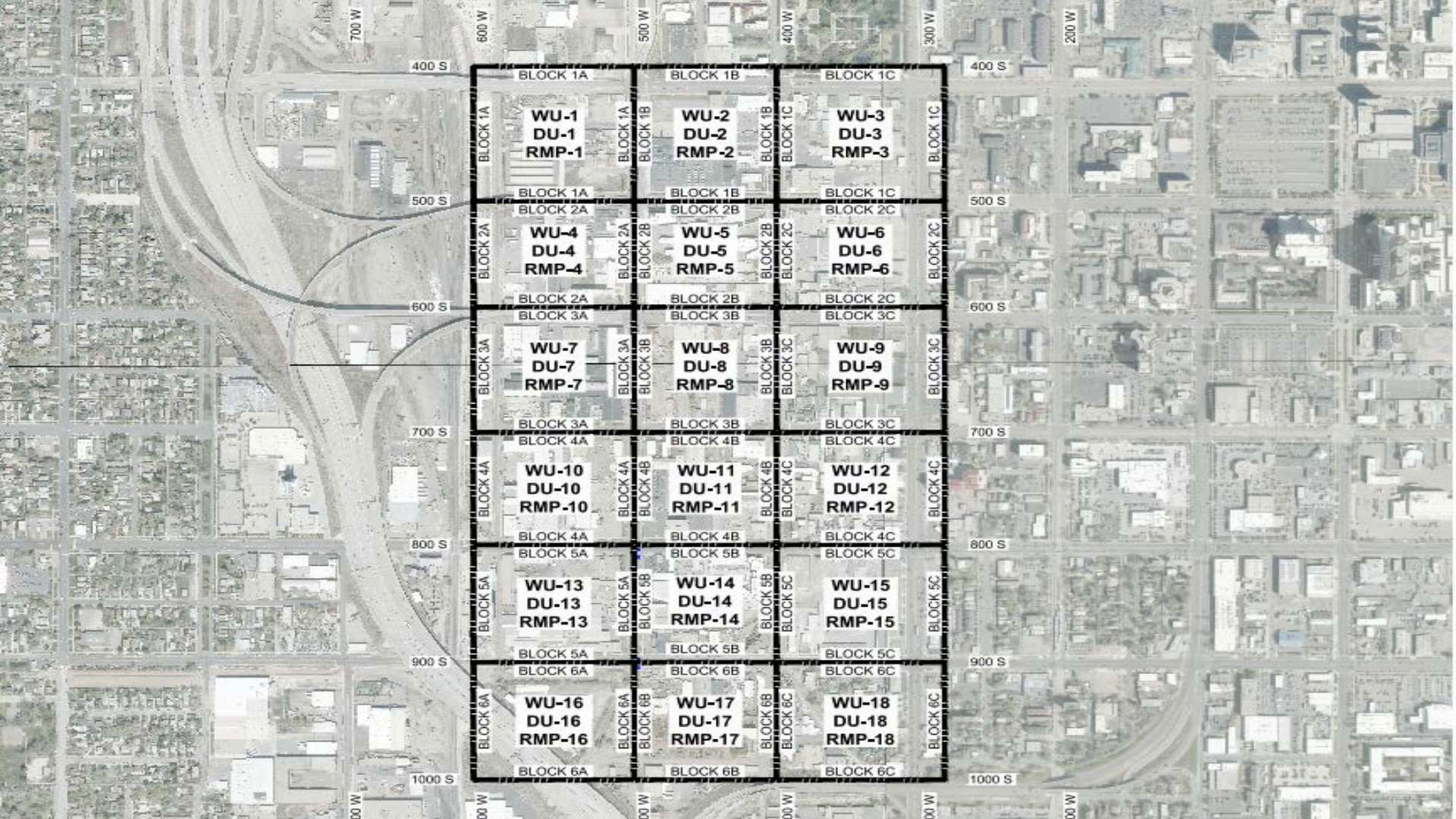
Automotive revolution – perspective towards 2030

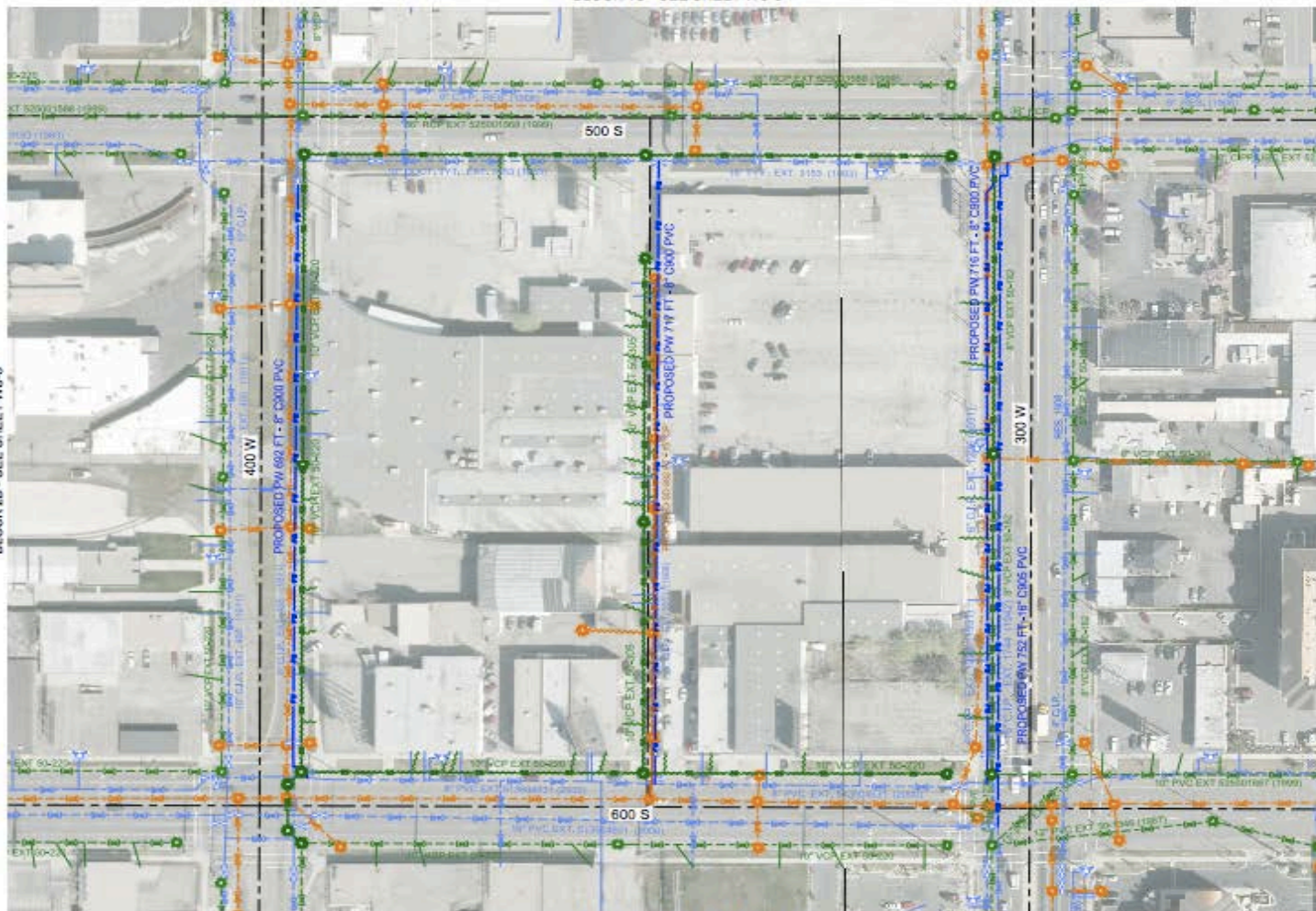
How the convergence of disruptive
technology-driven trends could
transform the auto industry

Advanced Industries January 2016



- Acceleration of advances in technology is changing the automotive industry.
- Adoption will occur at different rates in different locations.
- CITY TYPE is the most significant dimension of segmentation.





LEGEND

	EXISTING	PROPOSED
HYDRANT		
WATER VALVE		
STORM DRAIN MANHOLE		
SEWER MANHOLE		
DETECTOR BASIN		
CENTERLINE		
EXISTING WATER MAIN		
EXISTING WATER DRAINAGE		
EXISTING HYDRANT SERVICE		
EXISTING SEWER MAIN		
EXISTING SEWER LATERAL		
EXISTING STORM DRAIN PIPE		
EXISTING STORM DRAIN CONDUIT		
PROPOSED WATER MAIN		
PROPOSED SEWER MAIN		
PROPOSED STORM DRAIN PIPE		

RECOMMENDED REPLACEMENTS

- 2,125 FEET 6-INCH 125-YEAR OLD WATER LINE WITH 8-INCH C-905 PVC
- 752 FEET 16-INCH 74-YEAR OLD WATER LINE WITH 16-INCH C-905 PVC
- 652 FEET 12" STORM DRAIN WITH 15-INCH CP STORM DRAIN
- 1,351 FEET 8" & 10" 100-YEAR OLD SEWER WITH 10" SDR 35 PVC
- 15 MANHOLES
- 2,422 FEET CURB AND GUTTER (6 DRIVE APPROACHES) AND ALL OF GALE STREET
- 13,990 SQUARE YARDS ASPHALT PAVING
- 6 STREET LIGHTS
- BURY 700 FEET OF POWER LINE ALONG 300 WEST

RECOMMENDED CITY REPLACEMENTS

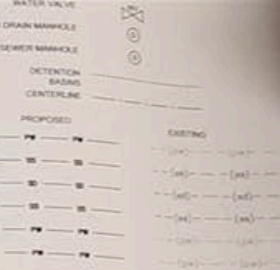
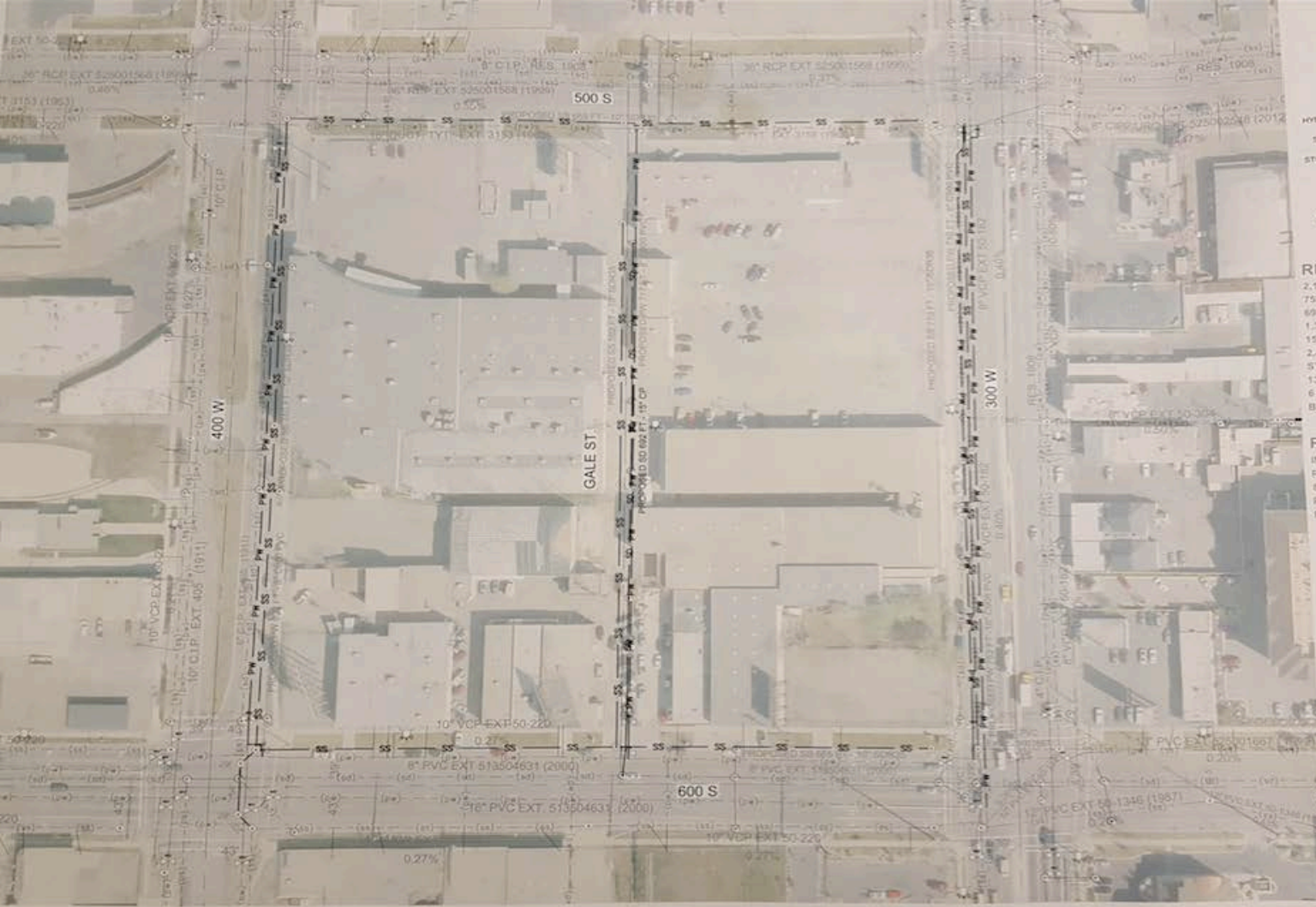
- INSPECT AND EVALUATE 714 FEET 36" CONCRETE SEWER, 1999
- REPLACE 1,582 FEET 100-YEAR OLD SEWER LINE WITH 10" SDR 35 PVC
- 8 MANHOLES
- REPLACE 1,439 FEET 100-YEAR OLD WATER LINE WITH 8-INCH C900 PVC
- PATCH ASPHALT AS NEEDED FOR UTILITY LINE REPAIRS

GRAPHIC SCALE

0 30 60 120 180

Scale: 1"=60'



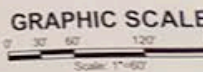


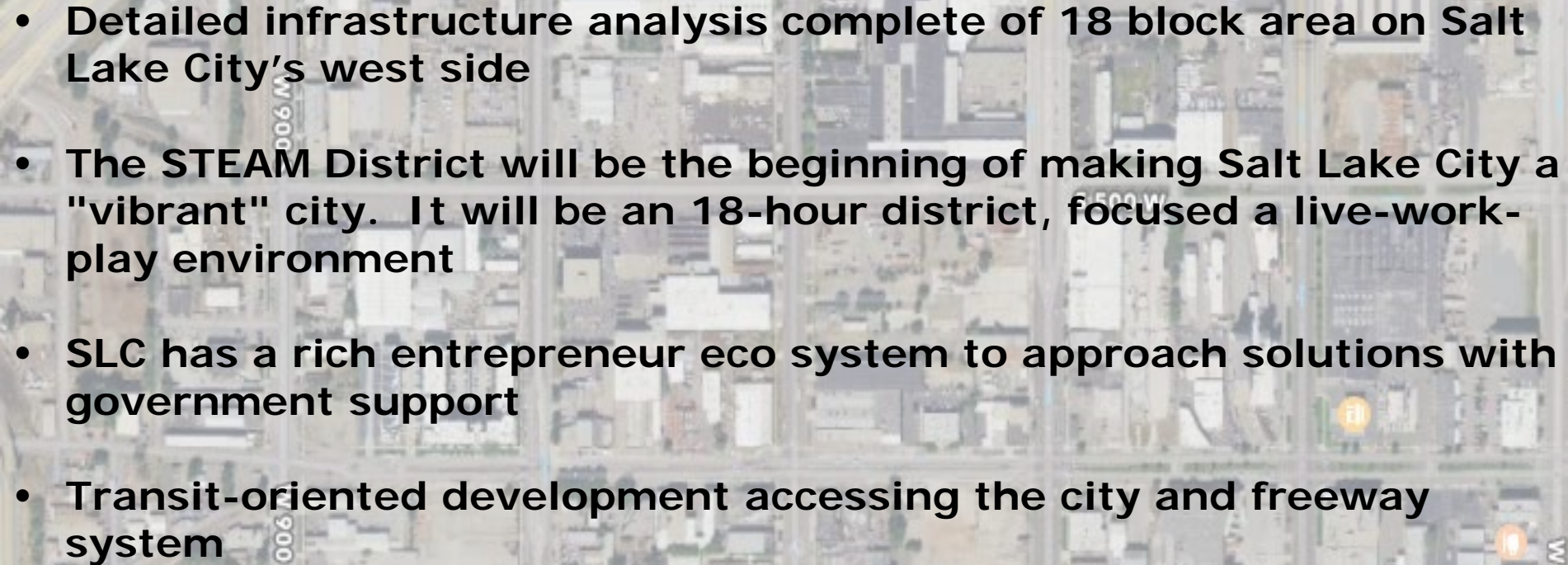
RECOMMENDED REPLACEMENTS

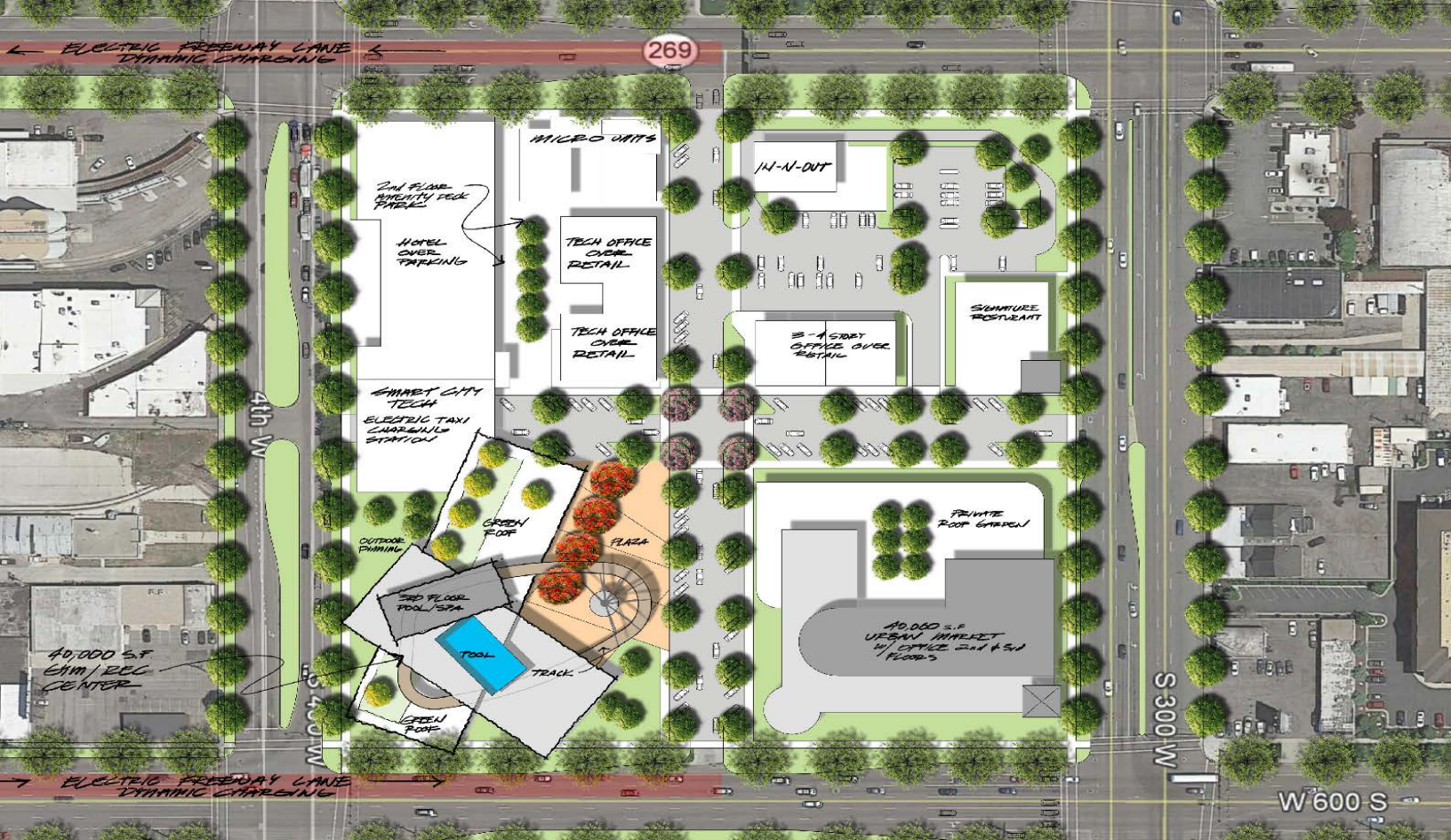
- 2,125 FEET 6-INCH 100-YEAR OLD WATER LINE WITH 8-INCH C-905 PVC
- 752 FEET 16-INCH 74-YEAR OLD WATER LINE WITH 16-INCH C-905 PVC
- 692 FEET 12" STORM DRAIN WITH 15-INCH CP STORM DRAIN
- 1,351 FEET 8" & 10" 100-YEAR OLD SEWER WITH 10" SDR 35 PVC
- 15 MANHOLES
- 2,422 FEET CURB AND GUTTER (S DRIVE APPROACHES) AND ALL OF G STREET
- 13,990 SQUARE YARDS ASPHALT PAVING
- 6 STREET LIGHTS
- BURY 700 FEET OF POWER LINE ALONG 300 WEST

RECOMMENDED CITY REPLACEMENTS

- INSPECT AND EVALUATE 714 FEET 30" CONCRETE SEWER, 1999
- REPLACE 1,582 FEET 100-YEAR OLD SEWER LINE WITH 10" SDR 35 P
- 8 MANHOLES
- REPLACE 1,439 FEET 100-YEAR OLD WATER LINE WITH 8-INCH C905
- PATCH ASPHALT AS NEEDED FOR UTILITY LINE REPAIRS



- 
- An aerial photograph of a city grid, likely Salt Lake City, showing a dense arrangement of buildings and streets. The image is overlaid with a semi-transparent white box containing a bulleted list. Several streets are labeled with text: 'W 900 S' on the left, 'W 400 S' on the right, 'S 300 W' at the bottom, and '500 W' near the top. There are several colored circular markers (orange, purple, yellow) placed on the grid, possibly indicating specific locations of interest or transit stops.
- Detailed infrastructure analysis complete of 18 block area on Salt Lake City's west side
 - The STEAM District will be the beginning of making Salt Lake City a "vibrant" city. It will be an 18-hour district, focused a live-work-play environment
 - SLC has a rich entrepreneur eco system to approach solutions with government support
 - Transit-oriented development accessing the city and freeway system



GALE STREET

SALT LAKE CITY, UTAH

AXIS DEVELOPMENT

GYM / REC CENTER



INDOOR OUTDOOR JOGGING TRACK



LAP POOL / ROOF GARDEN

GALE STREET
SALT LAKE CITY, UTAH

AXIS DEVELOPMENT



PROGRAM

GYMNASIUM / MULTIPURPOSE COURTS
DOUBLE HEIGHT YOGA ROOM
EXERCISE EQUIPMENT
CARDIO CINEMA
SPINNING
LOCKER ROOMS

6,000 SF
1,000 SF
4,000 SF
1,500 SF
1,000 SF
2,500 SF

RESTROOMS
SAUNA
CONFERENCE / MP
LAP SWIMMING
LOBBY / LOUNGE
STAFF

1,000 SF
1,000 SF
3,000 SF
4,000 SF
1,000 SF
2,500 SF

JUICE BAR
JOGGING TRACK 1/8 MILE
TOTAL

500 SF
3,500 SF
30,000 - 40,000 SF



KIDS ROOF GARDEN



PLAZA DINNING

GALE STREET
SALT LAKE CITY, UTAH

AXIS DEVELOPMENT

epg
THRIVE Studio

UPTOWN IN-N-OUT



ARCHITECTURE FORWARD

SHADE



OUTDOOR DINNING



GALE STREET
SALT LAKE CITY, UTAH

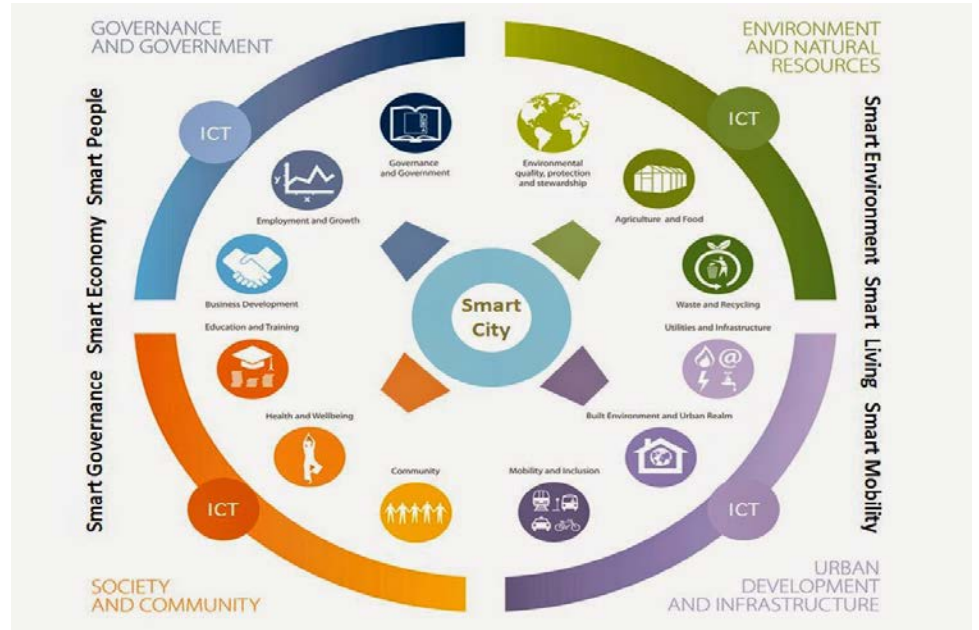
AXIS DEVELOPMENT

SMART CITY

CHARGING FREEWAY



ELECTRIC TAXI SERVICE



GALE STREET
SALT LAKE CITY, UTAH

AXIS DEVELOPMENT

epg
THRIVE Studio

IMAGINE...

Breakfast in Silicon Valley

Fly to SLC and jump in an EV

Ski the day on one of Utah's many peaks

End the day in one of Utah's 5 National Parks...

Thor Roundy
Rob Clayton
Richard Bell
Tyler Poulson
Chris Wohlhueter
David Christiansen

Ignite U
UDOT
DOE
SLC
Honeywell
USU

thorroundy@gmail.com
robertclayton@utah.gov
energy@utah.gov
tyler.poulson@slcgov.com
chris.wohlhueter@honeywell.com
david.chritiansen@usu.edu



The next SMART City...